

**Mckenzie Ave between Borden St and Cedar Hill Cross Rd**  
March 11, 2019 To March 15, 2019



The data presented here is for information purposes only and should not be considered authoritative for construction, geotechnical, engineering, navigational, legal, or other site-specific uses. The information shared is owned by the Transportation Division of the Engineering Department at the District of Saanich. Accuracy is not guaranteed.

Start Date: 11-Mar-19  
 Start Time: 0:00  
 Station ID: M0025-06

**Location 1: Mckenzie Ave between Borden St and Cedar Hill Cross Rd**

Note: Borden St and Cedar Hill Cross Rd

DATE:	March 11, 2019		March 12, 2019		March 13, 2019		March 14, 2019		March 15, 2019		WK AVG		WK AVG	HOURLY
	MON		TUE		WED		THURS		FRI		EB	WB	CH 1+2	%
Time:	EB	WB	EB	WB	EB	WB	EB	WB	EB	WB	EB	WB		
12-1 AM			65	62	91	64	70	61			75	62	138	0.4%
1-2 AM			42	46	32	50	24	44			33	47	79	0.2%
2-3 AM			27	29	28	30	35	32			30	30	60	0.2%
3-4 AM			20	27	24	31	23	36			22	31	54	0.2%
4-5 AM			81	75	83	61	88	70			84	69	153	0.5%
5-6 AM			136	161	141	153	143	148			140	154	294	0.9%
6-7 AM			369	370	384	398	389	396			381	388	769	2.3%
7-8 AM			988	766	973	801	988	805			983	791	1774	5.3%
8-9 AM			1418	1158	1416	1184	1515	1164			1450	1169	2618	7.8%
9-10 AM			1269	908	1267	856	1214	896			1250	887	2137	6.4%
10-11 AM			1072	849	1056	844	1031	878			1053	857	1910	5.7%
11-12 PM			1137	956	1103	967	1188	1030			1143	984	2127	6.4%
12-1 PM			1195	1079	1078	1031	1156	967			1143	1026	2169	6.5%
1-2 PM			1040	1041	1147	1042	1127	1082			1105	1055	2160	6.5%
2-3 PM			1169	1189	1135	1116	1158	1189			1154	1165	2319	6.9%
3-4 PM			1305	1305	1328	1334	1325	1323			1319	1321	2640	7.9%
4-5 PM			1405	1265	1381	1227	1385	1297			1390	1263	2653	7.9%
5-6 PM			1293	1100	1395	1094	1303	1133			1330	1109	2439	7.3%
6-7 PM			1002	982	1081	1011	1037	1041			1040	1011	2051	6.1%
7-8 PM			709	730	799	865	845	735			784	777	1561	4.7%
8-9 PM			646	674	632	613	739	614			672	634	1306	3.9%
9-10 PM			570	534	538	583	553	488			554	535	1089	3.3%
10-11 PM			290	278	268	318	333	306			297	301	598	1.8%
11-12 AM			164	161	214	178	178	183			185	174	359	1.1%
<b>LANES</b>			<b>17412</b>	<b>15745</b>	<b>17594</b>	<b>15851</b>	<b>17847</b>	<b>15918</b>			<b>17618</b>	<b>15838</b>	<b>33456</b>	<b>100.0%</b>
<b>TOTAL</b>			<b>33157</b>		<b>33445</b>		<b>33765</b>				<b>33460</b>			
	MON		TUE		WED		THURS		FRI		WK AVG			

PEAK HOUR					TOTAL VEHICALS-PEAK PERIODS		2 HOUR PEAK INTERVALS						
MAX. 7 - 9 am PEAK HOUR	2618	⇒	7.8%	between 8-9 AM	13780	⇒	6 HR TOTAL	<b>2 HR AM (7 - 9 AM)</b>					
MAX. 7 - 11 am PEAK HOUR	2618	⇒	7.8%	between 8-9 AM	9485	⇒	4 HR TOTAL	VEH / HR	VEH / 2HR	2 HR %			
MAX. 11 am - 1 pm PEAK HOUR	2169	⇒	6.5%	between 12-1 PM				7-8 AM	1774	4392	13.1%		
MAX. 11 am - 3 pm PEAK HOUR	2319	⇒	6.9%	between 2-3 PM				8-9 AM	2618				
MAX. 4 - 6 pm PEAK HOUR	2653	⇒	7.9%	between 4-5 PM				<b>2 HR NOON (11 - 1 PM)</b>					
MAX. 3 - 6 pm PEAK HOUR	2653	⇒	7.9%	between 4-5 PM				VEH / HR	VEH / 2HR	2 HR %			
								11-12 PM	2127	4296	12.8%		
								12-1 PM	2169				
								<b>2 HR PM (4 - 6 PM)</b>					
								VEH / HR	VEH / 2HR	2 HR %			
								4-5 PM	2653	5093	15.2%		
								5-6 PM	2439				

**Mckenzie Ave between Borden St and Cedar Hill Cross Rd**

Westbound

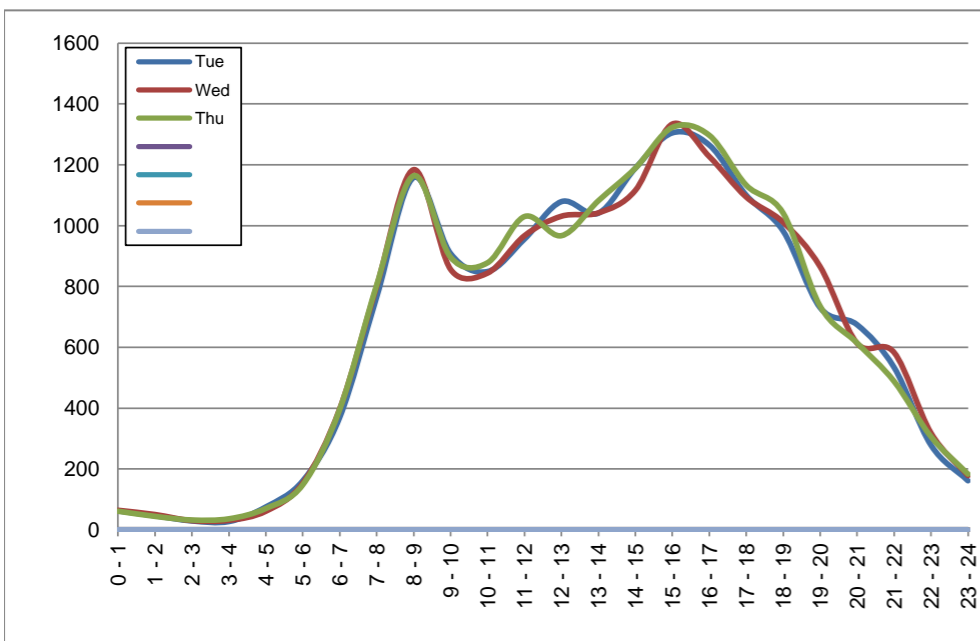
March 12, 2019 to March 14, 2019

**Hourly Volumes**

Time Period	Tue	Wed	Thu			
	Mar 12	Mar 13	Mar 14			
0 - 1	62	64	61			
1 - 2	46	50	44			
2 - 3	29	30	32			
3 - 4	27	31	36			
4 - 5	75	61	70			
5 - 6	161	153	148			
6 - 7	370	398	396			
7 - 8	766	801	805			
8 - 9	1158	1184	1164			
9 - 10	908	856	896			
10 - 11	849	844	878			
11 - 12	956	967	1030			
12 - 13	1079	1031	967			
13 - 14	1041	1042	1082			
14 - 15	1189	1116	1189			
15 - 16	1305	1334	1323			
16 - 17	1265	1227	1297			
17 - 18	1100	1094	1133			
18 - 19	982	1011	1041			
19 - 20	730	865	735			
20 - 21	674	613	614			
21 - 22	534	583	488			
22 - 23	278	318	306			
23 - 24	161	178	183			
<b>Day Total</b>	<b>15745</b>	<b>15851</b>	<b>15918</b>			

**15-Minute Volumes**

Time Start	Tue	Wed	Thu				Time Start	Tue	Wed	Thu			
	Mar 12	Mar 13	Mar 14					Mar 12	Mar 13	Mar 14			
0:00	15	17	21				12:00	282	250	231			
0:15	16	19	12				12:15	276	249	247			
0:30	9	15	14				12:30	278	267	229			
0:45	22	13	14				12:45	243	265	260			
1:00	22	26	19				13:00	234	245	303			
1:15	11	6	10				13:15	261	224	277			
1:30	7	10	8				13:30	259	284	234			
1:45	6	8	7				13:45	287	289	268			
2:00	8	10	12				14:00	244	268	276			
2:15	4	5	5				14:15	289	244	277			
2:30	8	5	10				14:30	322	289	306			
2:45	9	10	5				14:45	334	315	330			
3:00	5	4	4				15:00	358	353	316			
3:15	5	5	11				15:15	339	322	345			
3:30	9	8	7				15:30	307	346	345			
3:45	8	14	14				15:45	301	313	317			
4:00	16	18	15				16:00	304	301	301			
4:15	16	14	18				16:15	330	301	337			
4:30	22	17	19				16:30	302	313	351			
4:45	21	12	18				16:45	329	312	308			
5:00	20	22	21				17:00	307	270	298			
5:15	31	33	31				17:15	259	277	279			
5:30	46	46	51				17:30	275	284	296			
5:45	64	52	45				17:45	259	263	260			
6:00	60	66	54				18:00	293	290	310			
6:15	66	78	71				18:15	252	237	265			
6:30	124	110	136				18:30	229	255	228			
6:45	120	144	135				18:45	208	229	238			
7:00	137	138	148				19:00	197	244	191			
7:15	174	155	181				19:15	187	210	202			
7:30	185	229	219				19:30	180	225	174			
7:45	270	279	257				19:45	166	186	168			
8:00	283	269	295				20:00	179	175	162			
8:15	309	320	320				20:15	156	154	158			
8:30	291	299	267				20:30	192	157	139			
8:45	275	296	282				20:45	147	127	155			
9:00	211	237	232				21:00	142	147	146			
9:15	233	190	220				21:15	130	164	139			
9:30	220	229	197				21:30	131	136	105			
9:45	244	200	247				21:45	131	136	98			
10:00	233	224	233				22:00	103	110	89			
10:15	230	197	191				22:15	66	73	82			
10:30	204	212	222				22:30	62	78	79			
10:45	182	211	232				22:45	47	57	56			
11:00	230	230	226				23:00	62	71	71			
11:15	247	206	267				23:15	31	43	39			
11:30	241	260	277				23:30	35	34	37			
11:45	238	271	260				23:45	33	30	36			



Site notes:

**Mckenzie Ave between Borden St and Cedar Hill Cross Rd**

Eastbound

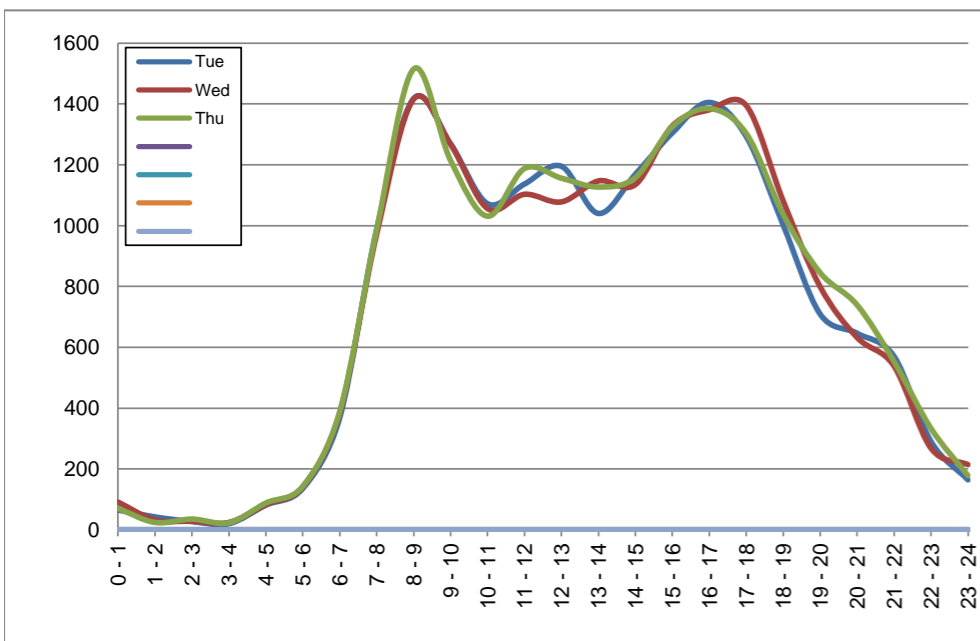
March 12, 2019 to March 14, 2019

**Hourly Volumes**

Time Period	Tue	Wed	Thu			
	Mar 12	Mar 13	Mar 14			
0 - 1	65	91	70			
1 - 2	42	32	24			
2 - 3	27	28	35			
3 - 4	20	24	23			
4 - 5	81	83	88			
5 - 6	136	141	143			
6 - 7	369	384	389			
7 - 8	988	973	988			
8 - 9	1418	1416	1515			
9 - 10	1269	1267	1214			
10 - 11	1072	1056	1031			
11 - 12	1137	1103	1188			
12 - 13	1195	1078	1156			
13 - 14	1040	1147	1127			
14 - 15	1169	1135	1158			
15 - 16	1305	1328	1325			
16 - 17	1405	1381	1385			
17 - 18	1293	1395	1303			
18 - 19	1002	1081	1037			
19 - 20	709	799	845			
20 - 21	646	632	739			
21 - 22	570	538	553			
22 - 23	290	268	333			
23 - 24	164	214	178			
<b>Day Total</b>	<b>17412</b>	<b>17594</b>	<b>17847</b>			

**15-Minute Volumes**

Time Start	Tue	Wed	Thu			
	Mar 12	Mar 13	Mar 14			
0:00	20	28	25			
0:15	10	16	20			
0:30	22	25	11			
0:45	13	22	14			
1:00	15	11	8			
1:15	12	7	6			
1:30	8	9	5			
1:45	7	5	5			
2:00	8	8	12			
2:15	5	8	12			
2:30	8	7	6			
2:45	6	5	5			
3:00	6	6	7			
3:15	3	5	2			
3:30	5	4	4			
3:45	6	9	10			
4:00	17	12	10			
4:15	14	16	18			
4:30	28	26	27			
4:45	22	29	33			
5:00	21	18	19			
5:15	28	28	32			
5:30	38	49	36			
5:45	49	46	56			
6:00	55	49	45			
6:15	84	93	94			
6:30	102	110	112			
6:45	128	132	138			
7:00	174	166	169			
7:15	215	223	222			
7:30	260	254	281			
7:45	339	330	316			
8:00	375	379	374			
8:15	379	406	415			
8:30	351	320	367			
8:45	313	311	359			
9:00	338	336	287			
9:15	309	334	294			
9:30	303	286	345			
9:45	319	311	288			
10:00	265	273	235			
10:15	250	267	246			
10:30	257	275	292			
10:45	300	241	258			
11:00	263	255	313			
11:15	293	298	289			
11:30	279	290	288			
11:45	302	260	298			
12:00	324	265	285			
12:15	299	283	263			
12:30	271	255	279			
12:45	301	275	329			
13:00	292	292	293			
13:15	246	310	299			
13:30	226	266	254			
13:45	276	279	281			
14:00	247	240	245			
14:15	289	288	292			
14:30	331	314	304			
14:45	302	293	317			
15:00	328	296	299			
15:15	317	357	316			
15:30	332	316	341			
15:45	328	359	369			
16:00	350	324	340			
16:15	313	374	326			
16:30	362	343	369			
16:45	380	340	350			
17:00	327	361	336			
17:15	347	342	350			
17:30	326	356	308			
17:45	293	336	309			
18:00	255	297	248			
18:15	262	285	284			
18:30	235	269	260			
18:45	250	230	245			
19:00	180	218	217			
19:15	190	209	239			
19:30	151	167	183			
19:45	188	205	206			
20:00	163	150	190			
20:15	183	212	219			
20:30	158	124	163			
20:45	142	146	167			
21:00	140	169	154			
21:15	164	133	148			
21:30	147	120	128			
21:45	119	116	123			
22:00	97	87	109			
22:15	80	74	71			
22:30	61	48	77			
22:45	52	59	76			
23:00	49	60	75			
23:15	43	65	38			
23:30	38	56	42			
23:45	34	33	23			



Site notes:

# Vehicle Speed Summary

Saanich Engineering Department

Count Id: **M0025-06**

Filename: [Mckenzie Ave between Borden St and Cedar Hill Cross Rd-Mar-2019.xlsm](#)

**Location:** Mckenzie Ave between Borden St and Cedar Hill Cross Rd

Note: Borden St and Cedar Hill Cross Rd

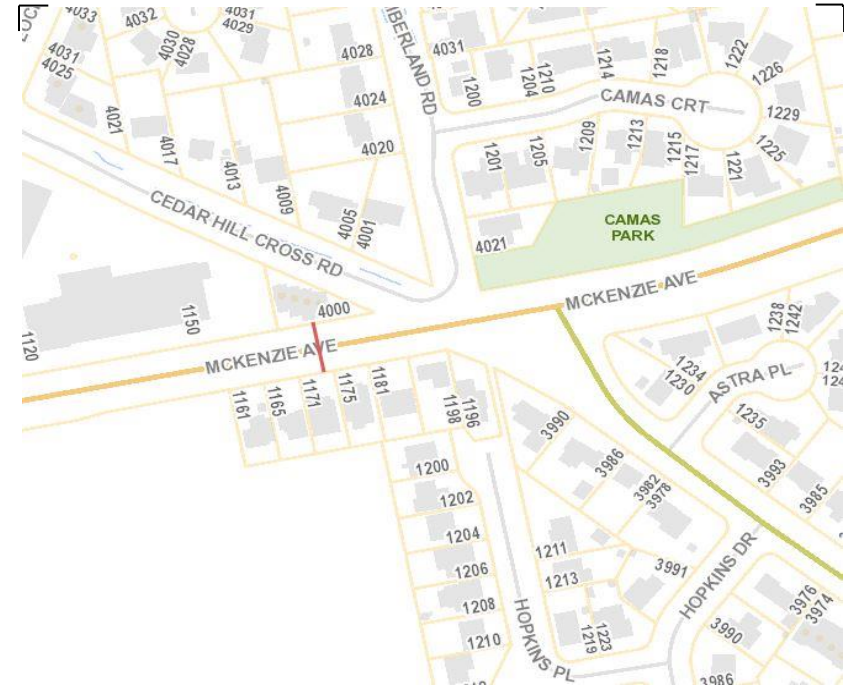
Direction: **East-West**

Dates: **March 11, 2019 To March 15, 2019**

*Filtered data*

AVG. SPEED	<b>33</b> mph	<b>53</b> km/h
50 % SPEED	<b>33</b> mph	<b>53</b> km/h
85 % SPEED	<b>37</b> mph	<b>60</b> km/h
95 % SPEED	<b>40</b> mph	<b>65</b> km/h

Location Map



**Mckenzie Ave between Borden St and Cedar Hill Cross Rd**

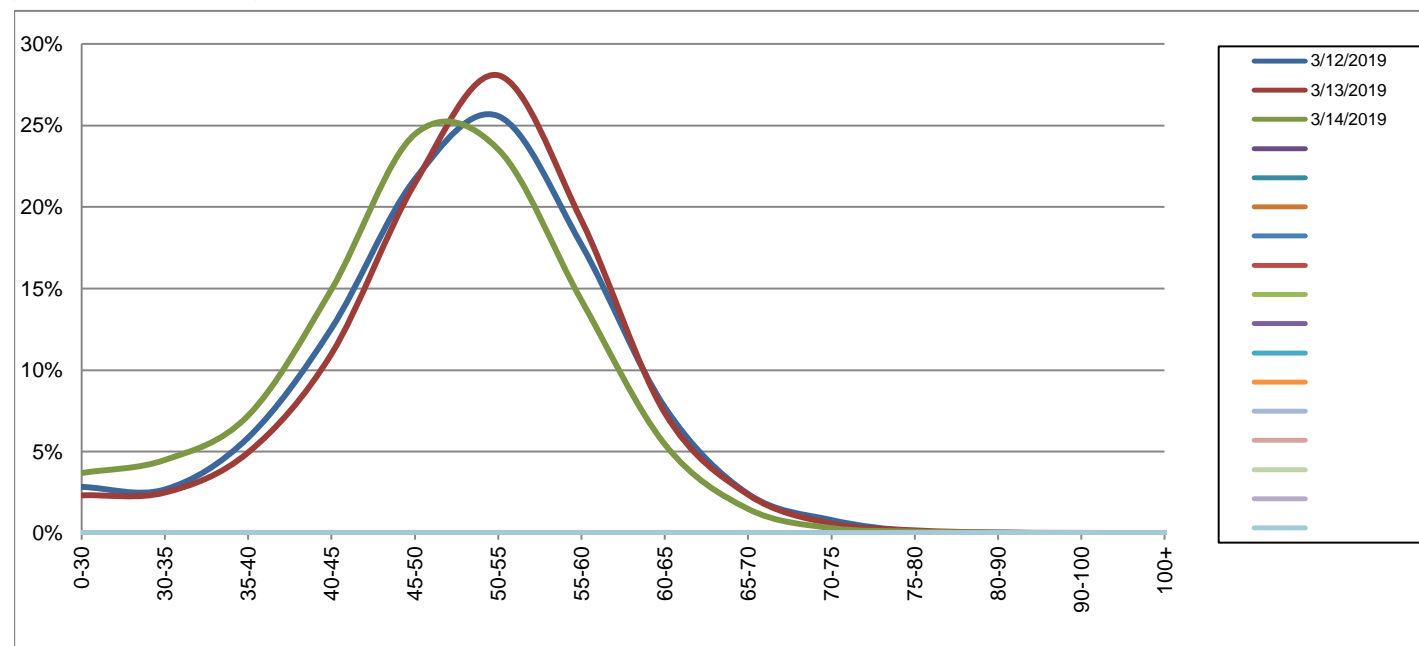
Westbound

March 12, 2019 to March 14, 2019

Daily Speed Bin Percentages															Daily Speed Bin Volumes														Total	Avg.
Bin #	1	2	3	4	5	6	7	8	9	10	11	12	13	14	1	2	3	4	5	6	7	8	9	10	11	12	13	14	Volume	Speed
Bin Speeds	0-30	30-35	35-40	40-45	45-50	50-55	55-60	60-65	65-70	70-75	75-80	80-90	90-100	100+	0-30	30-35	35-40	40-45	45-50	50-55	55-60	60-65	65-70	70-75	75-80	80-90	90-100	100+		
3/12/2019	2.8%	2.7%	5.9%	12.6%	21.7%	25.6%	17.7%	7.7%	2.4%	0.8%	0.1%	0.0%	0.0%	0.0%	447	422	923	1977	3416	4027	2784	1216	379	127	18	6	3	0	15745	50
3/13/2019	2.3%	2.5%	5.0%	11.0%	21.4%	28.1%	19.2%	7.4%	2.4%	0.6%	0.2%	0.0%	0.0%	0.0%	368	395	785	1743	3399	4450	3040	1169	375	93	28	5	1	0	15851	50
3/14/2019	3.7%	4.5%	7.2%	14.9%	24.5%	23.5%	14.3%	5.5%	1.5%	0.3%	0.1%	0.0%	0.0%	0.0%	587	715	1148	2379	3893	3747	2272	868	237	50	16	6	0	0	15918	48
<b>Total</b>	3.0%	3.2%	6.0%	12.8%	22.5%	25.7%	17.0%	6.8%	2.1%	0.6%	0.1%	0.0%	0.0%	0.0%	1402	1532	2856	6099	10708	12224	8096	3253	991	270	62	17	4	0	47514	49

**Speed Data Summary**

Bin #	1	2	3	4	5	6	7	8	9	10	11	12	13	14	Total
Bin Speeds	0-30	30-35	35-40	40-45	45-50	50-55	55-60	60-65	65-70	70-75	75-80	80-90	90-100	100+	
Survey Total	1402	1532	2856	6099	10708	12224	8096	3253	991	270	62	17	4	0	47514
% Total	3.0%	3.2%	6.0%	12.8%	22.5%	25.7%	17.0%	6.8%	2.1%	0.6%	0.1%	0.0%	0.0%	0.0%	100%
Accumulated %	3.0%	6.2%	12.2%	25.0%	47.6%	73.3%	90.3%	97.2%	99.3%	99.8%	100.0%	100.0%	100.0%	100%	
Inverse Accum. %	97.0%	93.8%	87.8%	75.0%	52.4%	26.7%	9.7%	2.8%	0.7%	0.2%	0.0%	0.0%	0.0%	0.0%	
Average Speed	49 KM/H														



Site notes:

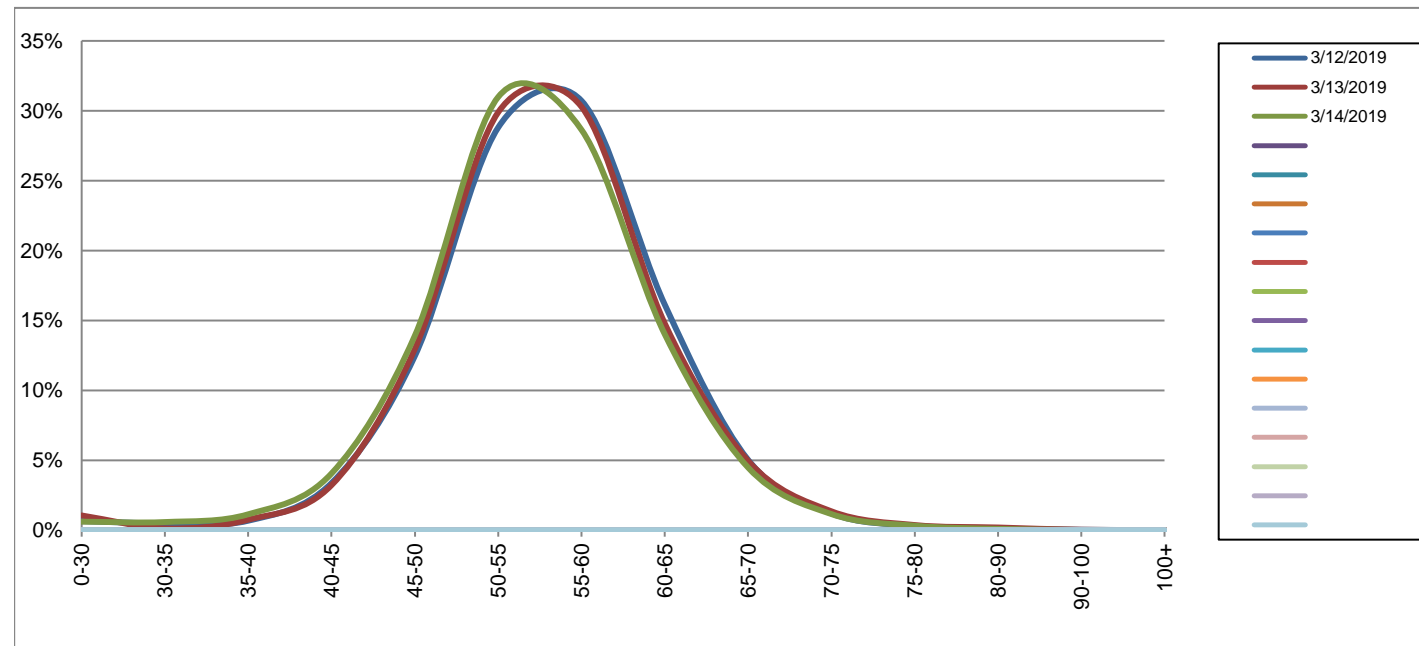
**Mckenzie Ave between Borden St and Cedar Hill Cross Rd**

Eastbound  
March 12, 2019 to March 14, 2019

Daily Speed Bin Percentages															Daily Speed Bin Volumes														Total	Avg.
Bin #	1	2	3	4	5	6	7	8	9	10	11	12	13	14	1	2	3	4	5	6	7	8	9	10	11	12	13	14	Volume	Speed
Bin Speeds	0-30	30-35	35-40	40-45	45-50	50-55	55-60	60-65	65-70	70-75	75-80	80-90	90-100	100+	0-30	30-35	35-40	40-45	45-50	50-55	55-60	60-65	65-70	70-75	75-80	80-90	90-100	100+		
3/12/2019	0.6%	0.5%	0.7%	3.4%	12.5%	28.8%	30.7%	16.1%	5.0%	1.2%	0.3%	0.1%	0.0%	0.0%	113	86	118	587	2168	5014	5349	2809	877	209	54	21	6	1	17412	55
3/13/2019	1.1%	0.1%	0.8%	3.2%	13.0%	29.9%	30.3%	14.8%	5.0%	1.4%	0.4%	0.2%	0.0%	0.0%	186	23	132	567	2280	5258	5329	2601	873	238	65	34	6	2	17594	55
3/14/2019	0.6%	0.6%	1.1%	4.1%	13.9%	31.0%	28.6%	14.0%	4.5%	1.2%	0.3%	0.1%	0.0%	0.0%	109	104	203	724	2482	5529	5112	2501	800	206	57	17	3	0	17847	55
<b>Total</b>	<b>0.8%</b>	<b>0.4%</b>	<b>0.9%</b>	<b>3.6%</b>	<b>13.1%</b>	<b>29.9%</b>	<b>29.9%</b>	<b>15.0%</b>	<b>4.8%</b>	<b>1.2%</b>	<b>0.3%</b>	<b>0.1%</b>	<b>0.0%</b>	<b>0.0%</b>	<b>408</b>	<b>213</b>	<b>453</b>	<b>1878</b>	<b>6930</b>	<b>15801</b>	<b>15790</b>	<b>7911</b>	<b>2550</b>	<b>653</b>	<b>176</b>	<b>72</b>	<b>15</b>	<b>3</b>	<b>52853</b>	<b>55</b>

**Speed Data Summary**

Bin #	1	2	3	4	5	6	7	8	9	10	11	12	13	14	Total
Bin Speeds	0-30	30-35	35-40	40-45	45-50	50-55	55-60	60-65	65-70	70-75	75-80	80-90	90-100	100+	
Survey Total	408	213	453	1878	6930	15801	15790	7911	2550	653	176	72	15	3	52853
% Total	0.8%	0.4%	0.9%	3.6%	13.1%	29.9%	29.9%	15.0%	4.8%	1.2%	0.3%	0.1%	0.0%	0.0%	100%
Accumulated %	0.8%	1.2%	2.0%	5.6%	18.7%	48.6%	78.5%	93.4%	98.3%	99.5%	99.8%	100.0%	100.0%	100%	
Inverse Accum. %	99.2%	98.8%	98.0%	94.4%	81.3%	51.4%	21.5%	6.6%	1.7%	0.5%	0.2%	0.0%	0.0%	0.0%	
Average Speed	55 KM/H														



Site notes:



**Mckenzie Ave between Borden St and Cedar Hill Cross Rd**

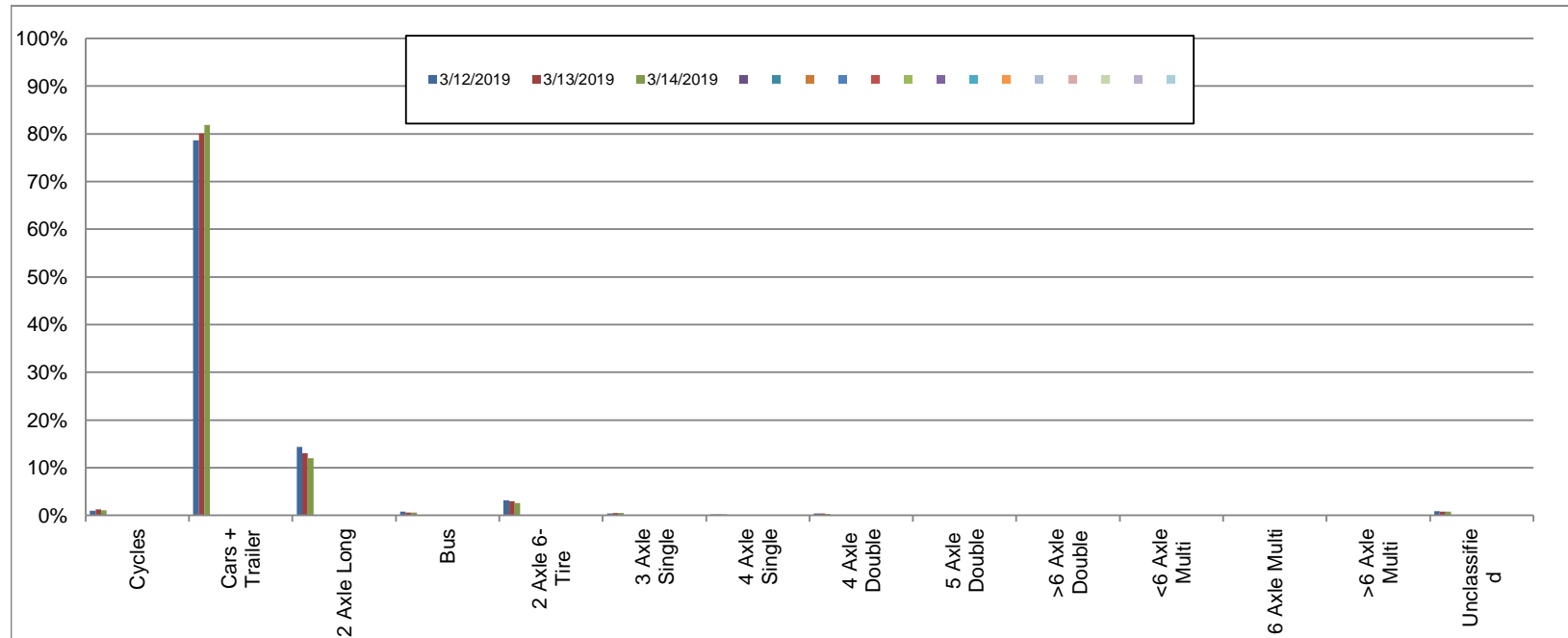
Westbound

March 12, 2019 to March 14, 2019

Daily Class Bin Percentages															Daily Class Bin Volumes														
Bin #	1	2	3	4	5	6	7	8	9	10	11	12	13	14	1	2	3	4	5	6	7	8	9	10	11	12	13	14	Total Volume
Bin Class	Cycles	Cars + Trailer	2 Axle Long	Bus	2 Axle 6-Tire	3 Axle Single	4 Axle Single	4 Axle Double	5 Axle Double	>6 Axle Double	<6 Axle Multi	6 Axle Multi	>6 Axle Multi	Unclassified	Cycles	Cars + Trailer	2 Axle Long	Bus	2 Axle 6-Tire	3 Axle Single	4 Axle Single	4 Axle Double	5 Axle Double	>6 Axle Double	<6 Axle Multi	6 Axle Multi	>6 Axle Multi	Unclassified	Total Volume
3/12/2019	1.0%	78.7%	14.3%	0.8%	3.2%	0.4%	0.2%	0.4%	0.1%	0.0%	0.0%	0.0%	0.0%	0.8%	159	12384	2254	125	501	61	32	67	20	5	1	0	3	133	15745
3/13/2019	1.3%	80.1%	13.1%	0.6%	3.0%	0.5%	0.2%	0.4%	0.1%	0.0%	0.0%	0.0%	0.0%	0.8%	201	12690	2072	95	472	75	29	70	17	3	0	0	3	124	15851
3/14/2019	1.1%	81.9%	12.0%	0.6%	2.6%	0.5%	0.2%	0.3%	0.1%	0.0%	0.0%	0.0%	0.0%	0.8%	171	13037	1911	93	412	72	31	48	11	6	2	0	1	123	15918
<b>Total</b>	<b>1.1%</b>	<b>80.2%</b>	<b>13.1%</b>	<b>0.7%</b>	<b>2.9%</b>	<b>0.4%</b>	<b>0.2%</b>	<b>0.4%</b>	<b>0.1%</b>	<b>0.0%</b>	<b>0.0%</b>	<b>0.0%</b>	<b>0.0%</b>	<b>0.8%</b>	<b>531</b>	<b>38111</b>	<b>6237</b>	<b>313</b>	<b>1385</b>	<b>208</b>	<b>92</b>	<b>185</b>	<b>48</b>	<b>14</b>	<b>3</b>	<b>0</b>	<b>7</b>	<b>380</b>	<b>47514</b>

**Class Data Summary**

Bin #	1	2	3	4	5	6	7	8	9	10	11	12	13	14	Total Volume
Bin Class	Cycles	Cars + Trailer	2 Axle Long	Bus	2 Axle 6-Tire	3 Axle Single	4 Axle Single	4 Axle Double	5 Axle Double	>6 Axle Double	<6 Axle Multi	6 Axle Multi	>6 Axle Multi	Unclassified	Total Volume
<b>Survey Total</b>	531	38111	6237	313	1385	208	92	185	48	14	3	0	7	380	47514
<b>% Total</b>	1.1%	80.2%	13.1%	0.7%	2.9%	0.4%	0.2%	0.4%	0.1%	0.0%	0.0%	0.0%	0.0%	0.8%	100%
<b>Accumulated %</b>	1.1%	81.3%	94.5%	95.1%	98.0%	98.5%	98.7%	99.0%	99.1%	99.2%	99.2%	99.2%	99.2%	100.0%	
<b>Inv. Accum. %</b>	98.9%	18.7%	5.5%	4.9%	2.0%	1.5%	1.3%	1.0%	0.9%	0.8%	0.8%	0.8%	0.8%	0.0%	



**Classification Descriptions**

Bin #	Bin Description
1	Motorcycles
2	Passenger cars, including those with recreational trailers
3	2-axle pick-ups, vans, and RVs, including those with recreational trailers
4	Buses
5	2-axle, 6-tire single units
6	3-axle single units
7	4-axle single units
8	3-axle or 4-axle double unit
9	5-axle double unit
10	6-, 7-, or 8-axle double unit
11	5-axle multiple unit
12	6-axle multiple unit
13	7-or-more-axle multiple unit
14	Vehicles that could not be classified

Site notes:



**Mckenzie Ave between Borden St and Cedar Hill Cross Rd**

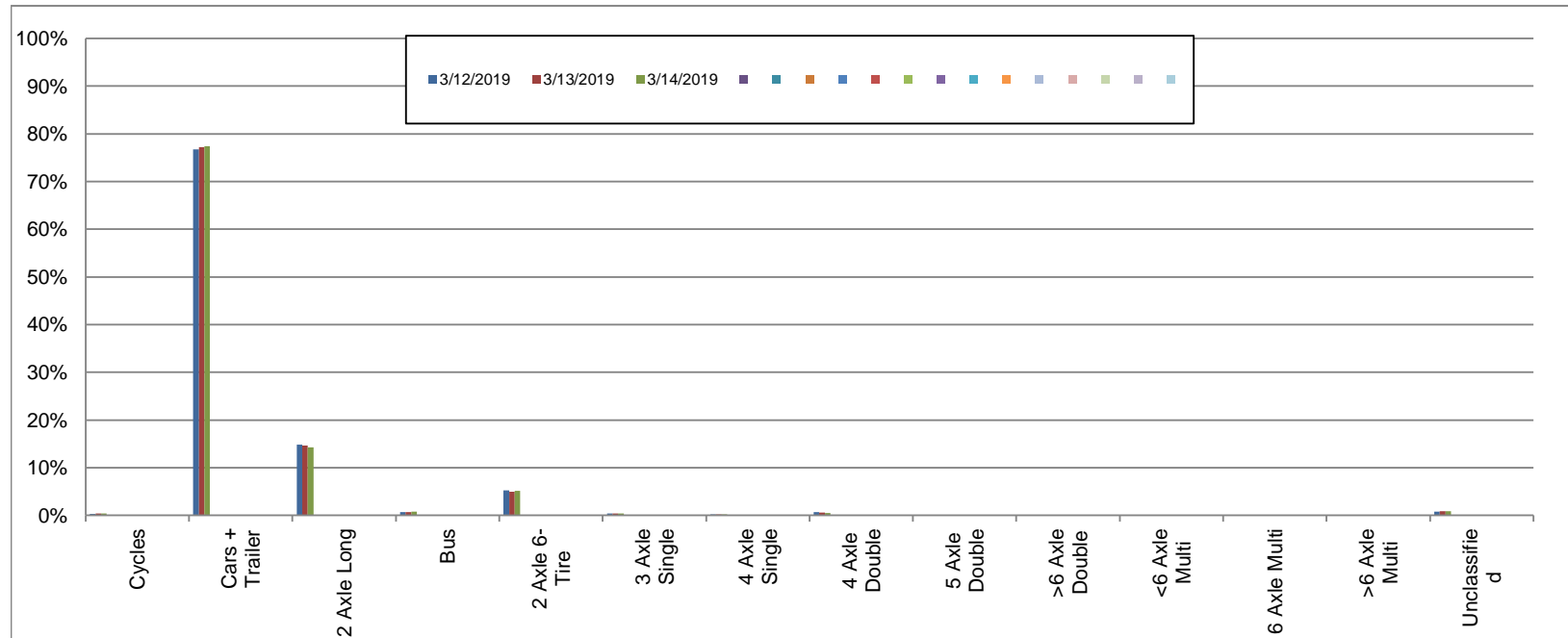
Eastbound

March 12, 2019 to March 14, 2019

Daily Class Bin Percentages															Daily Class Bin Volumes											Total Volume			
Bin #	1	2	3	4	5	6	7	8	9	10	11	12	13	14	1	2	3	4	5	6	7	8	9	10	11		12	13	14
Bin Class	Cycles	Cars + Trailer	2 Axle Long	Bus	2 Axle 6-Tire	3 Axle Single	4 Axle Single	4 Axle Double	5 Axle Double	>6 Axle Double	<6 Axle Multi	6 Axle Multi	>6 Axle Multi	Unclassified	Cycles	Cars + Trailer	2 Axle Long	Bus	2 Axle 6-Tire	3 Axle Single	4 Axle Single	4 Axle Double	5 Axle Double	>6 Axle Double	<6 Axle Multi	6 Axle Multi	>6 Axle Multi	Unclassified	
3/12/2019	0.3%	76.7%	14.8%	0.7%	5.2%	0.4%	0.2%	0.7%	0.1%	0.0%	0.0%	0.0%	0.0%	0.8%	59	13359	2581	124	913	63	32	117	18	6	1	2	4	133	17412
3/13/2019	0.4%	77.2%	14.7%	0.6%	4.9%	0.4%	0.2%	0.6%	0.1%	0.0%	0.0%	0.0%	0.0%	0.9%	69	13586	2582	114	869	71	29	97	18	3	1	1	3	151	17594
3/14/2019	0.4%	77.4%	14.3%	0.8%	5.1%	0.4%	0.2%	0.5%	0.0%	0.0%	0.0%	0.0%	0.0%	0.8%	70	13818	2553	138	911	65	32	93	8	5	0	3	0	151	17847
<b>Total</b>	<b>0.4%</b>	<b>77.1%</b>	<b>14.6%</b>	<b>0.7%</b>	<b>5.1%</b>	<b>0.4%</b>	<b>0.2%</b>	<b>0.6%</b>	<b>0.1%</b>	<b>0.0%</b>	<b>0.0%</b>	<b>0.0%</b>	<b>0.0%</b>	<b>0.8%</b>	<b>198</b>	<b>40763</b>	<b>7716</b>	<b>376</b>	<b>2693</b>	<b>199</b>	<b>93</b>	<b>307</b>	<b>44</b>	<b>14</b>	<b>2</b>	<b>6</b>	<b>7</b>	<b>435</b>	<b>52853</b>

**Class Data Summary**

Bin #	1	2	3	4	5	6	7	8	9	10	11	12	13	14	Total Volume
Bin Class	Cycles	Cars + Trailer	2 Axle Long	Bus	2 Axle 6-Tire	3 Axle Single	4 Axle Single	4 Axle Double	5 Axle Double	>6 Axle Double	<6 Axle Multi	6 Axle Multi	>6 Axle Multi	Unclassified	Total Volume
<b>Survey Total</b>	198	40763	7716	376	2693	199	93	307	44	14	2	6	7	435	52853
<b>% Total</b>	0.4%	77.1%	14.6%	0.7%	5.1%	0.4%	0.2%	0.6%	0.1%	0.0%	0.0%	0.0%	0.0%	0.8%	100%
<b>Accumulated %</b>	0.4%	77.5%	92.1%	92.8%	97.9%	98.3%	98.5%	99.0%	99.1%	99.1%	99.2%	99.2%	99.2%	100.0%	
<b>Inv. Accum. %</b>	99.6%	22.5%	7.9%	7.2%	2.1%	1.7%	1.5%	1.0%	0.9%	0.9%	0.8%	0.8%	0.8%	0.0%	



**Classification Descriptions**

Bin #	Bin Description
1	Motorcycles
2	Passenger cars, including those with recreational trailers
3	2-axle pick-ups, vans, and RVs, including those with recreational trailers
4	Buses
5	2-axle, 6-tire single units
6	3-axle single units
7	4-axle single units
8	3-axle or 4-axle double unit
9	5-axle double unit
10	6-, 7-, or 8-axle double unit
11	5-axle multiple unit
12	6-axle multiple unit
13	7-or-more-axle multiple unit
14	Vehicles that could not be classified

Site notes: